

ANSWER KEY CHAPTER 1

Chapter 1: Orientation to the Human Body

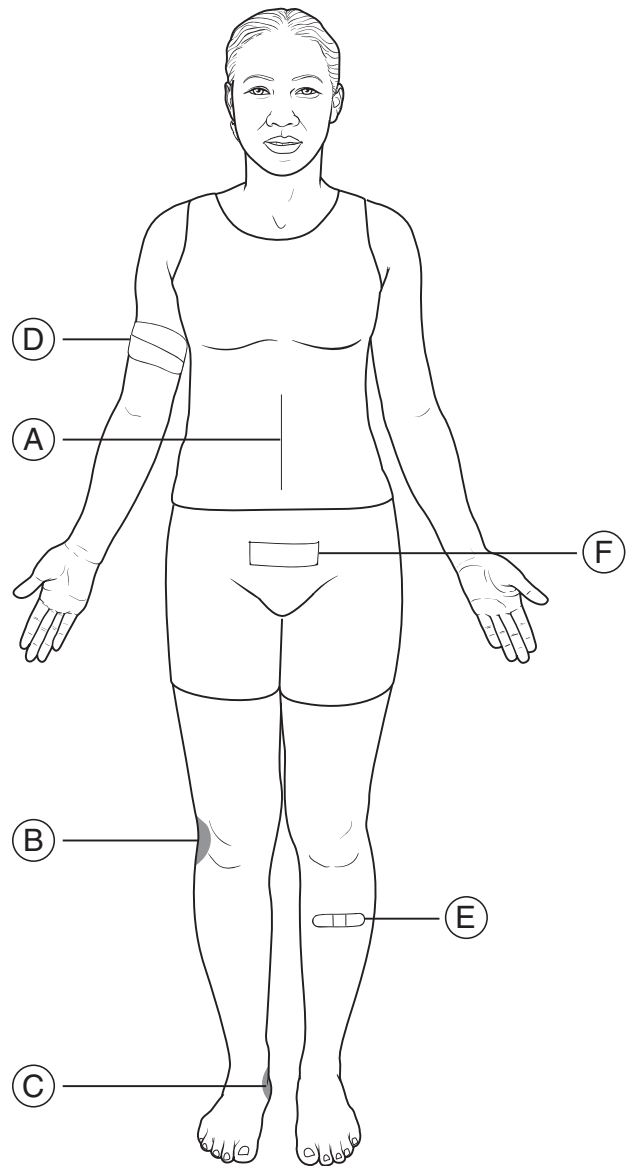
LIST FOR LEARNING: ORGANIZATION OF THE BODY

1. Atoms
2. Molecules
3. Organelles
4. Cells
5. Tissues
6. Organs
7. Organ systems
8. A human organism

MAKE A CONNECTION: TYPES OF TISSUE

1. Epithelial: C, F
2. Connective: E, G
3. Muscle: A, H
4. Nerve: B, D

DRAWING CONCLUSIONS: DIRECTIONAL TERMS

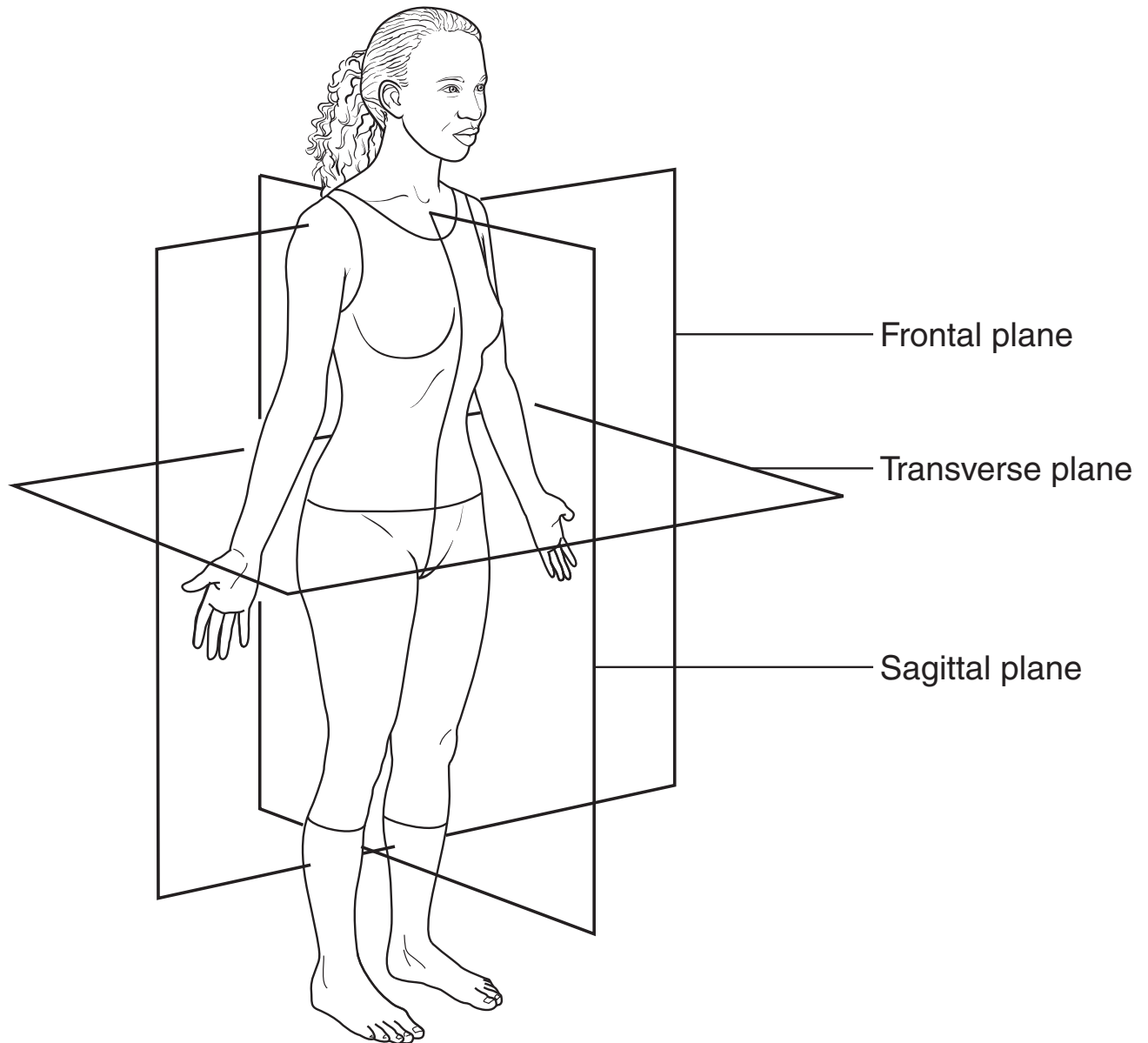


PUZZLE IT OUT: ORGAN SYSTEMS

	1 I N T E G U M E N T A											2 R Y	
												E	
												P	
		3 C I			4 R C U L A T O R					Y			
				E								O	
5 E		6 M U S C U L A R										D	
N				P								U	
7 D	I	G	E	S	T	I	V	E		8 S		C	
O				R						K		T	
C	9 U R I N A R Y									E		I	
R				T						L		V	
I	10 N E R V O U S									E		E	
N				R						T			
E		11 L Y M P H A T I C											
										L			

ANSWER KEY CHAPTER 1 *Continued*

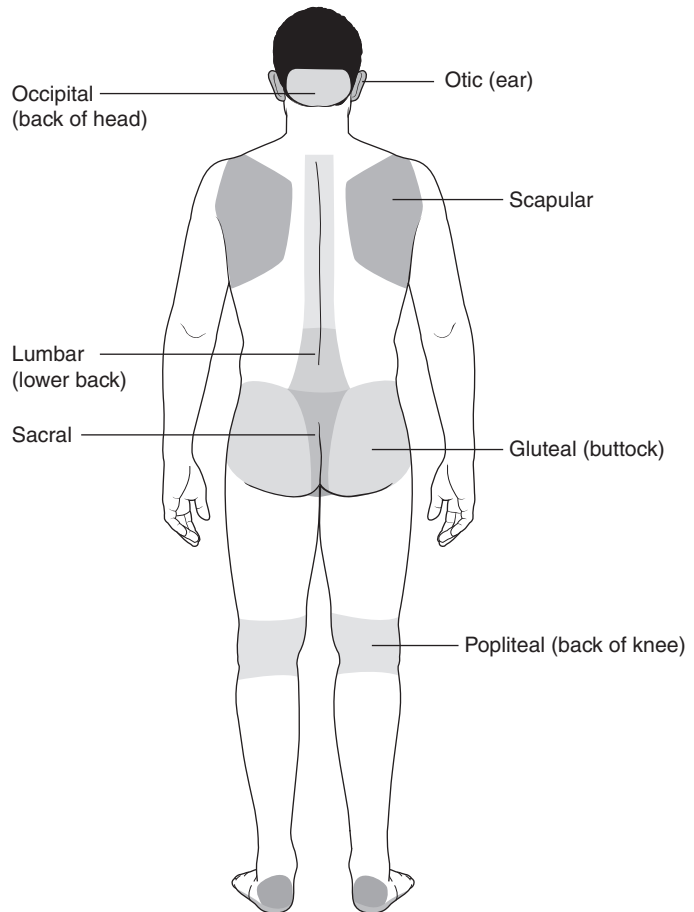
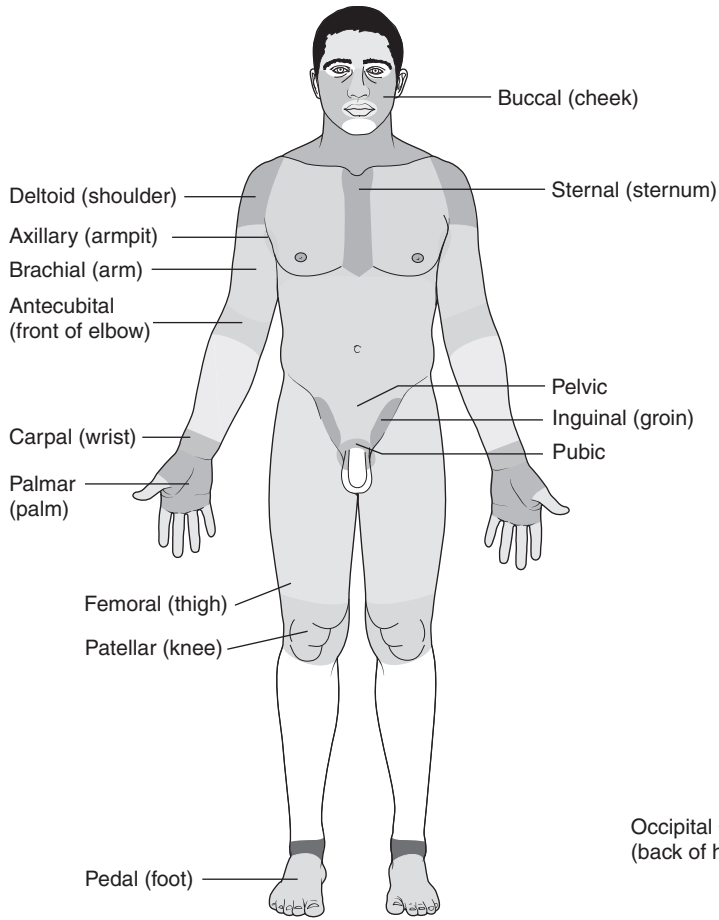
DRAWING CONCLUSIONS: BODY PLANES



1. midsagittal; right; left
2. horizontal; upper (superior); lower (inferior)
3. coronal; anterior; posterior

ANSWER KEY CHAPTER 1 *Continued*

CONCEPTUALIZE IN COLOR: BODY REGIONS

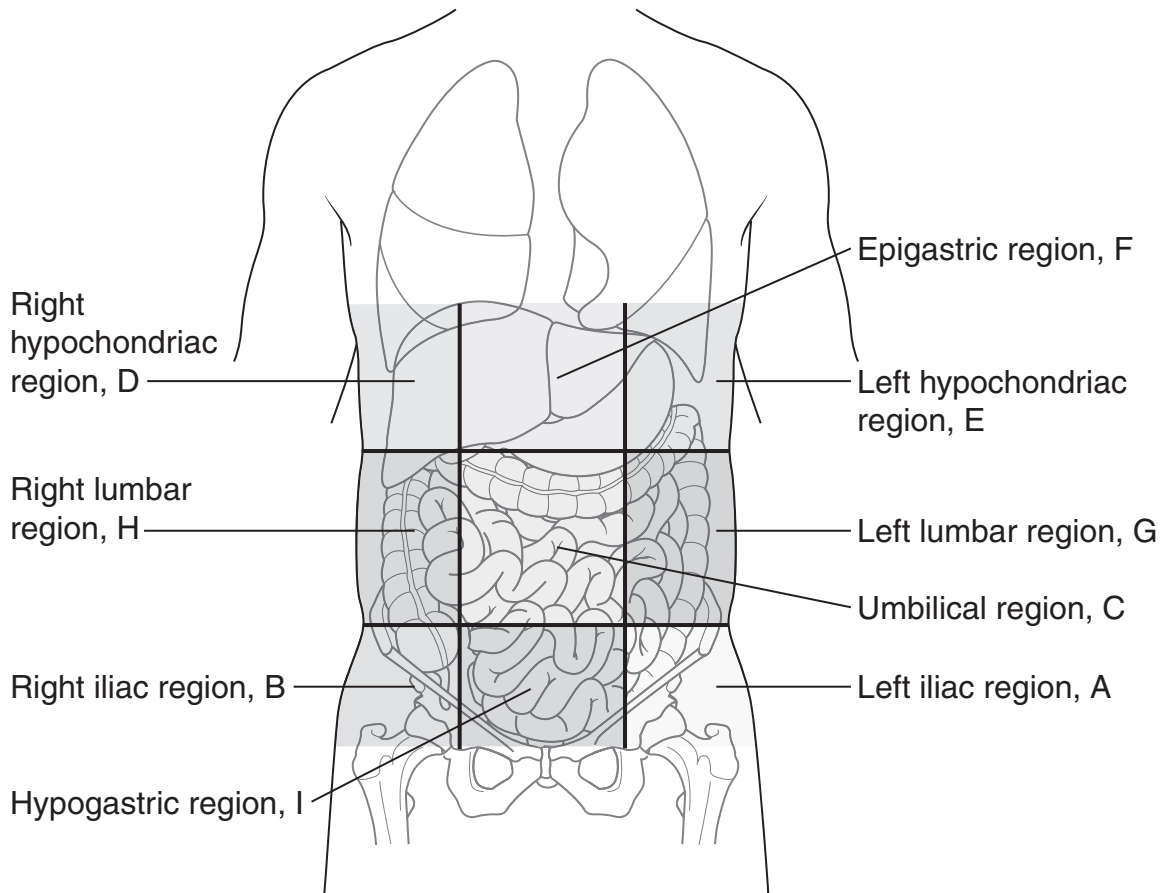


ANSWER KEY CHAPTER 1 *Continued*

DRAWING CONCLUSIONS: BODY CAVITIES

1. Cranial cavity
2. Spinal cavity
3. Thoracic cavity
4. Abdominal cavity
5. Pelvic cavity
6. Abdominopelvic cavity
7. Ventral cavity
8. Dorsal cavity

DRAWING CONCLUSIONS: ABDOMINAL REGIONS



ILLUMINATE THE TRUTH: THE BASICS

1. anatomy
2. cells
3. organs
4. forward
5. consequences in

FILL IN THE GAPS: HOMEOSTASIS

1. equilibrium
2. (1) receptor; (2) control center, (3) effector
3. opposes; reverses
4. reinforces; amplifies
5. negative