

**Solutions and Activities**  
for  
**CHAPTER 2**

**THEORETICAL TOOLS OF PUBLIC FINANCE**

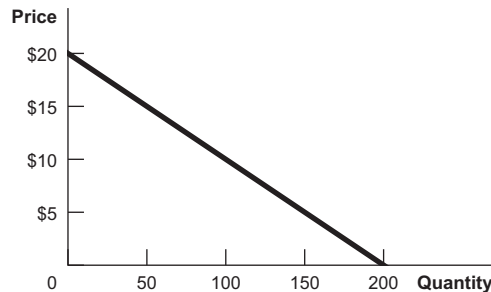
**Questions and Problems**

1. The price of a bus trip is \$1 and the price of a gallon of gas (at the time of this writing!) is \$3. What is the relative price of a gallon of gas, in terms of bus trips? What happens when the price of a bus trip falls to 75¢?

A commuter could exchange 3 bus trips for 1 gallon of gas (both will cost \$3), so the relative price of a gallon of gas is 3 bus trips. At 75¢ per bus trip, the relative price of a gallon of gas has increased to  $3 \div 0.75 = 4$  bus trips.

2. Draw the demand curve  $Q = 200 - 10P$ . Calculate the price elasticity of demand at prices of \$5, \$10, and \$15 to show how it changes as you move along this linear demand curve.

One way to sketch a linear demand function is to find the  $x$  ( $Q$ ) and  $y$  ( $P$ ) intercepts.  $Q = 0$  when  $P = \$20$ . When  $P = 0$ ,  $Q = 200$ .



Solving for  $P = \$5$ ,  $Q = 200 - 10(5) = 200 - 50 = 150$ .

Similarly, solving for  $P = \$10$ ,  $Q = 200 - 10(10) = 100$ .

And solving for  $P = \$15$ ,  $Q = 200 - 150 = 50$ .

Price elasticity is the percent change in the quantity purchased divided by the percent change in price. To calculate these percentage changes, divide the change in each variable by its original value. Moving in \$5 increments:

As  $P$  increases from \$5 to \$10,  $Q$  falls from 150 to 100.  
Therefore,  $P$  increases by 100% ( $5/5$ ) as  $Q$  falls by 33% ( $50/150$ ).  
Elasticity =  $-0.33/1.00 = -0.33$ .

As  $P$  increases from \$10 to \$15,  $Q$  falls from 100 to 50.  
 $P$  increases by 50% ( $5/10$ ) as  $Q$  falls by 50% ( $50/100$ ).  
Elasticity =  $-0.5/0.5 = -1.0$ .

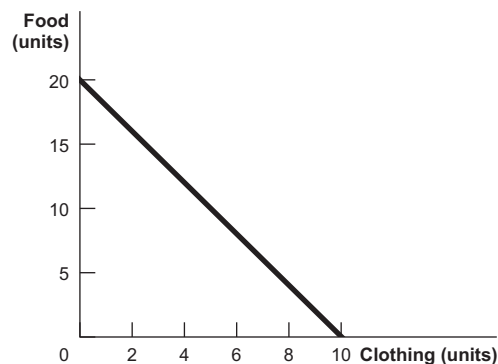
As  $P$  increases from \$15 to \$20,  $Q$  falls from 50 to 0.  
 $P$  increases by 33% ( $5/15$ ) and  $Q$  increases by 100% ( $50/50$ ).  
 Elasticity is  $-1.0/0.33 = -3.03$ .

Even though the magnitude of the change remains the same (for every \$5 increase in price, the quantity purchased falls by 50), in terms of percentage change elasticity of demand increases in magnitude as price increases.

**3. You have \$100 to spend on food and clothing. The price of food is \$5 and the price of clothing is \$10.**

**a. Graph your budget constraint.**

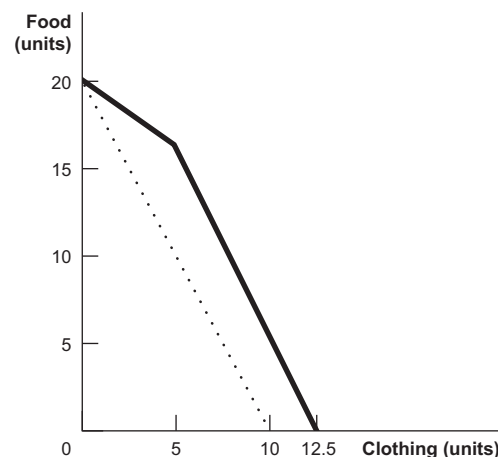
The food intercept ( $y$  in the accompanying figure) is 20 units. If you spend the entire \$100 on food, at \$5 per unit you can afford to purchase  $100/5 = 20$  units. Similarly, the clothing intercept ( $x$ ) is  $100/10 = 10$ . The slope, when food is graphed on the vertical axis, will be  $-2$ .



**b. Suppose that the government subsidizes clothing such that each unit of clothing is half-price, up to the first 5 units of clothing. Graph your budget constraint in this circumstance.**

This budget constraint will have two different slopes. At quantities of clothing less than or equal to 5, the slope will be  $-1$  because 1 unit of food costs the same as 1 unit of clothing (\$5). At quantities of clothing greater than 5, the slope will be  $-2$  (if graphed with food on the  $y$ -axis), parallel to the budget constraint in a. The point where the line kinks,  $(5, 15)$ , is now feasible. The new  $x$ -intercept (clothing intercept) is 12.5: if you purchase 5 units at \$5 per unit, you are left with \$75 to spend. If you spend it all on clothing at \$10 per unit, you can purchase 7.5 units, for a total of 12.5 units.

New budget constraint (bold) and original (dashed):

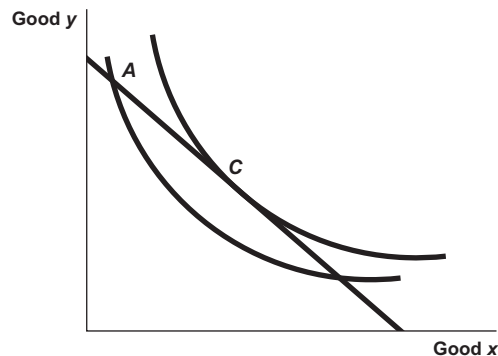


**4. Use utility theory to explain why people ever leave all-you-can-eat buffets.**

The theory of diminishing marginal utility predicts that the more people eat the less utility they gain from each additional unit consumed. The marginal price of an additional unit of food at an all-you-can-eat buffet is zero; rational consumers will eat only until their marginal utility gain from an additional bite is exactly zero. The marginal cost of remaining at the buffet is the value of the time spent on the best alternative activity. When the marginal benefit of that activity is greater than the marginal benefit of remaining at the buffet, diners will leave.

**5. Explain why a consumer's optimal choice is the point at which her budget constraint is tangent to an indifference curve.**

Consumers optimize their choice when they are on the highest possible indifference curve given their budget constraint. Suppose a consumer's choice is feasible (on the budget constraint) but not at a tangency, as at point *A* in the accompanying figure. Under these circumstances, the budget constraint must pass through the indifference curve where it intersects the chosen point. There must then be at least a segment of the budget constraint that lies above (up and to the right of) the indifference curve associated with that choice. Any choice on that segment would yield higher utility. Only when no part of the budget constraint lies above the indifference curve associated with a consumer's choice are no feasible improvements in utility possible. The single tangency point (*C* in the figure) is the only point at which this occurs.



**6. Consider the utilitarian social welfare function and the Rawlsian social welfare function, the two social welfare functions described in Chapter 2.**

**a. Which one is more consistent with a government that redistributes from rich to poor? Which is more consistent with a government that does not do any redistribution from rich to poor?**

The Rawlsian social welfare function is consistent with redistribution from the rich to the poor whenever utility is increasing in wealth (or income). The utilitarian social welfare function can also be consistent with a government that redistributes from the rich to the poor, for example, if utility depends only on wealth and exhibits diminishing marginal utility. However, the Rawlsian social welfare function weights the least-well-off more heavily, so it will generally prescribe more redistribution than the utilitarian social welfare function.

**b. Think about your answer to 6a. Show that government redistribution from rich to poor can still be consistent with either of the two social welfare functions.**

If utility depends only on wealth and exhibits diminishing marginal utility, and if efficiency losses from redistribution are small, then both the utilitarian and Rawlsian social welfare functions can be consistent with government redistribution. A simple example can

illustrate this point. Suppose that utility as a function of wealth is expressed as  $v = \sqrt{w}$ , and that a rich person has wealth of \$100 (yielding utility of 10) and a poor person has wealth of \$25 (yielding utility of 5). The sum of utilities is  $10 + 5 = 15$ .

Tax the wealthy person \$19; their remaining wealth is \$81, yielding utility of 9. Give \$12 of the \$19 to the poor person; this yields wealth of  $25 + 12 = 37$ . The square root (utility) of 37 is greater than 6, so total utility is now greater than 15, even with the efficiency loss of \$7 ( $\$19 - \$12$ ). Under the Rawlsian function, which considers only the least-well-off person's utility, social welfare has increased from 5 to greater than 6.

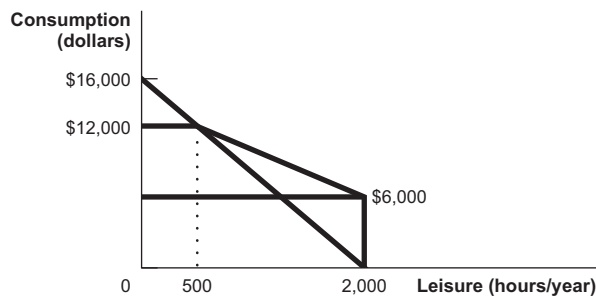
**7. Since the free market (competitive) equilibrium maximizes social efficiency, why would the government ever intervene in an economy?**

Efficiency is not the only goal of government policy. Equity concerns induce government to intervene to help people living in poverty, even when there are efficiency losses. In economic terms, a society that willingly redistributes resources has determined that it is willing to pay for or give up some efficiency in exchange for the benefit of living in a society that cares for those who have fewer resources. Social welfare functions that reflect this willingness to pay for equity or preference for equity may be maximized when the government intervenes to redistribute resources.

**8. Consider an income guarantee program with an income guarantee of \$6,000 and a benefit reduction rate of 50%. A person can work up to 2,000 hours per year at \$8 per hour.**

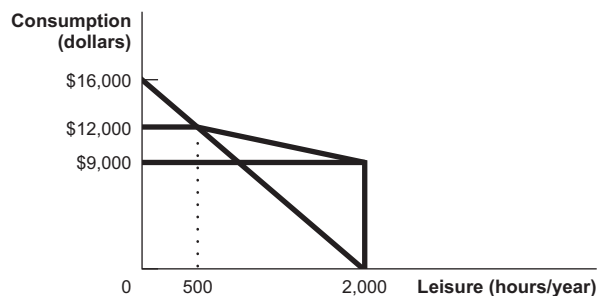
**a. Draw the person's budget constraint with the income guarantee.**

A person will no longer be eligible for benefits when he or she works 1,500 hours and earns \$12,000 (guarantee of  $\$6,000/50\%$ ).



**b. Suppose that the income guarantee rises to \$9,000 but with a 75% reduction rate. Draw the new budget constraint.**

Benefits will end under these conditions when earned income is  $\$9,000/0.75 = \$12,000$ , just as shown in a. The difference is that the all-leisure income is higher, but the slope of the line segment from 500 hours of leisure to 2,000 hours of leisure is flatter.



**c. Which of these two income guarantee programs is more likely to discourage work? Explain.**

A higher income guarantee with a higher reduction rate is more likely to discourage work for two reasons. First, not working at all yields a higher income. Second, a person who works less than 1,500 hours will be allowed to keep much less of his or her earned income when the effective tax rate is 75%. With a 75% benefit reduction rate, the effective hourly wage is only \$2 per hour (25% of \$8).

**9. A good is called *normal* if a person consumes more of it when her income rises (for example, she might see movies in theaters more often as her income rises). It is called *inferior* if a person consumes less of it when her income rises (for example, she might be less inclined to buy a used car as her income rises). Sally eats out at the local burger joint quite frequently. The burger joint suddenly lowers its prices.**

**a. Suppose that, in response to the lower burger prices, Sally goes to the local pizza restaurant less often. Can you tell from this whether or not pizza is an inferior good for Sally?**

You cannot. Since Sally eats at the burger joint quite a bit, falling burger prices imply that she is richer. If this was the only effect, you could indeed conclude that pizza is an inferior good—Sally gets richer and buys less pizza. But there is also a substitution effect here: the relative price of pizza has gone up. This leads her to substitute away from pizza. If the substitution effect is bigger than the income effect for Sally, then she could respond in this way, even if pizza is a normal good.

**b. Suppose *instead* that, in response to the lower burger prices, Sally goes to the burger joint less often. Explain how this could happen in terms of the income and substitution effects by using the concepts of normal and/or inferior goods.**

The substitution effect says that when the relative price of burgers falls, Sally should consume more of them. Since she actually consumes less of them, the income effect must be working in the opposite direction, leading her to consume fewer burgers (and it must be stronger than the substitution effect). Since the fall of burger prices made Sally richer, burgers must be an inferior good for Sally. (Note: A good for which falling prices leads to reduced consumption is known as a Giffen good.)

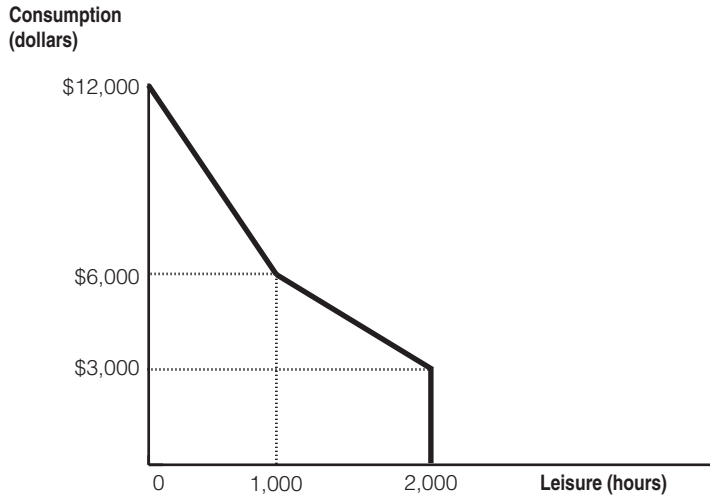
## Advanced Questions

**10. Consider an income guarantee program with an income guarantee of \$3,000 and a benefit reduction rate of 50%. A person can work up to 2,000 hours per year at \$6 per hour. Alice, Bob, Calvin, and Deborah work for 100,  $333\frac{1}{3}$ , 400, and 600 hours, respectively, under this program.**

The government is considering altering the program to improve work incentives. Its proposal has two pieces. First, it will lower the guarantee to \$2,000. Second, it will not reduce benefits for the first \$3,000 earned by the workers. After this, it will reduce benefits at a reduction rate of 50%.

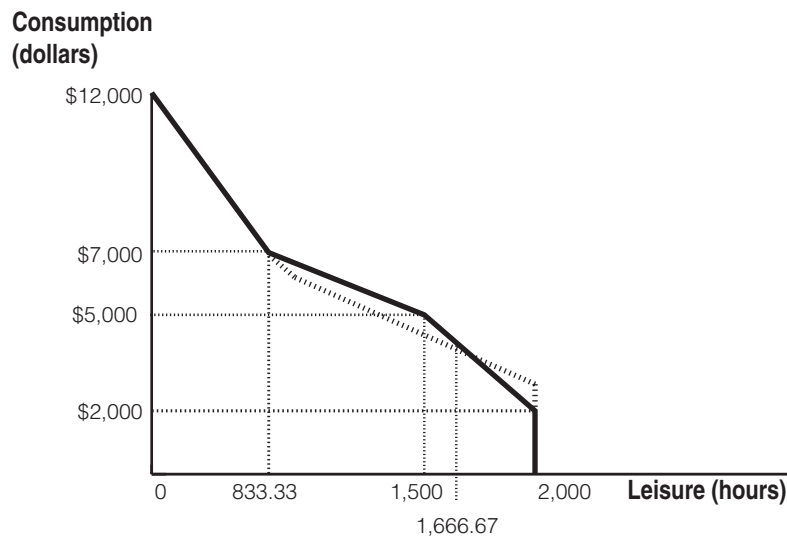
**a. Draw the budget constraint facing any worker under the original program.**

The budget constraint for the original program is depicted in the graph that follows. With zero hours worked (2,000 hours leisure), a worker gets to consume \$3,000—the guaranteed income level. After 1,000 hours of work, the benefits have been reduced to zero (50% of \$6,000 in income).



**b. Draw the budget constraint facing any worker under the proposed new program.**

The budget constraint for the proposed program is depicted in the following graph. At zero hours of work (2,000 hours of leisure), the worker now only gets to consume the lower \$2,000 guarantee. She can work for up to 500 hours without any benefit reductions, so if she works for 500 hours, she gets to consume \$5,000 (= \$2,000 + \$6/hr × 500 hrs) and has 1,500 hours of leisure. After working an additional,  $2,000/3 \approx 666.67$  hours, for a total of about 1,133.33 hours of work or 833.33 hours of leisure, she will be receiving no benefits. (Her benefits have been reduced by  $50\% \times \$6/\text{hr} \times 2,000/3 \text{ hrs} = 50\% \times \$4,000 = \$2,000$ .) The dashed line also depicts the original budget constraint.



**c. Which of the four workers do you expect to work more under the new program? Who do you expect work less? Are there any workers for whom you cannot tell if they will work more or less?**

Workers working fewer than 500 hours see their hourly wage effectively doubled under the plan. The substitution effect therefore tends to make Alice, Bob, and Calvin all work more. One can calculate that the two budget constraints cross at  $333\frac{1}{3}$  hours of

work, or 1,666.67 hours of leisure. The income effect is thus different for these three workers. Alice was working less than  $333\frac{1}{3}$  hours under the old policy, so the policy change effectively makes her poorer. She consumes less of all normal goods, including leisure, so this also makes her work more. We can unambiguously conclude that she will work more. Bob was working exactly  $333\frac{1}{3}$  hours, so he feels no income effect. We can conclude from the substitution effect alone that he too will work more. Calvin was working more than  $333\frac{1}{3}$  hours before, so this policy change effectively makes him richer. He will therefore tend to work less due to the income effect. We cannot tell if the substitution effect or the income effect is stronger, so we cannot tell if Calvin will work more or less. Finally, Deborah was working 600 hours before. Under both policies, the effective wage of someone working this many hours is \$3/hr (since 50% of income is offset by reduced benefits). There is no substitution effect for her. As the graph shows, however, she experiences an increase in income. We conclude that she will work less.

**11. Consider a free market with demand equal to  $Q = 1,200 - 10P$  and supply equal to  $Q = 20P$ .**

**a. What is the value of consumer surplus? What is the value of producer surplus?**

The first step is to find the equilibrium price and quantity by setting quantity demanded equal to quantity supplied. Recall that the condition for equilibrium is that it is the price at which these quantities are equal.

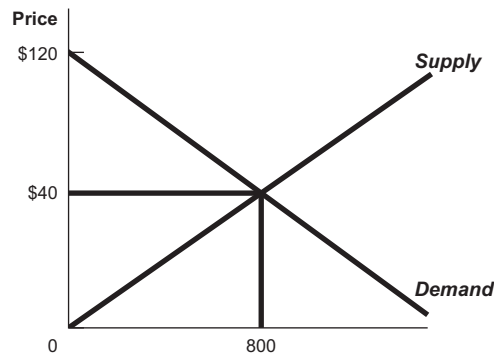
From  $Q = 1,200 - 10P$  and  $Q = 20P$ , substitute:  $1,200 - 10P = 20P$ .

Adding  $10P$  to each side of the equation yields  $1,200 = 30P$ .

Dividing both sides by 30 yields  $P = 40$ . If  $Q = 20P$ , then in equilibrium

$$Q = 20(40) = 800.$$

Consumer and producer surplus are determined by finding the areas of triangles; area is equal to  $\frac{1}{2}$  the base times the height.



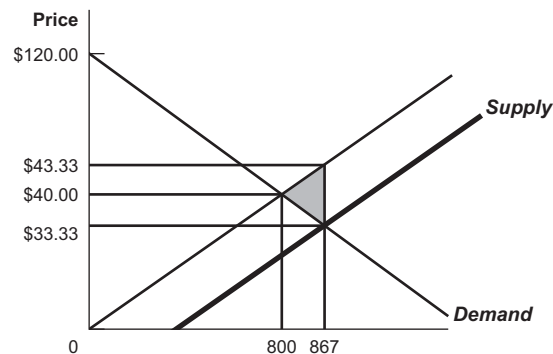
The vertical intercept is the price at which quantity demanded is zero:  $0 = 1,200 - 10P$ . This solves to 120.

$$\text{Consumer surplus} = \frac{1}{2} (800)(120 - 40) = \frac{1}{2} (800)(80) = 32,000.$$

$$\text{Producer surplus} = \frac{1}{2} (800)(40) = 16,000.$$

$$\text{Total surplus} = 48,000.$$

- b. Now the government imposes a \$10 per unit subsidy on the production of the good. What is the consumer surplus now? The producer surplus? Why is there a deadweight loss associated with the subsidy, and what is the size of this loss?



A subsidy in effect lowers the cost of producing a good, yielding the bold supply line. The new supply function is  $Q = 20(P + 10)$  because the producer receives the price plus \$10 when it produces. Solving for a new equilibrium,

$$20P + 200 = 1,200 - 10P.$$

$$30P = 1,000.$$

$$P = \$100/3 \approx \$33.33; Q = 20(100/3 + 10) = 2,600/3 \approx 866.67.$$

$$\text{Consumer surplus} = \frac{1}{2}(2,600/3)(120 - 100/3) \approx 37,555.56.$$

$$\text{Producer surplus} = \frac{1}{2}(100/3 + 10)(2,600/3) \approx 18,777.78.$$

$$\text{Cost of subsidy} = 10(2,600/3) \approx 8,666.67.$$

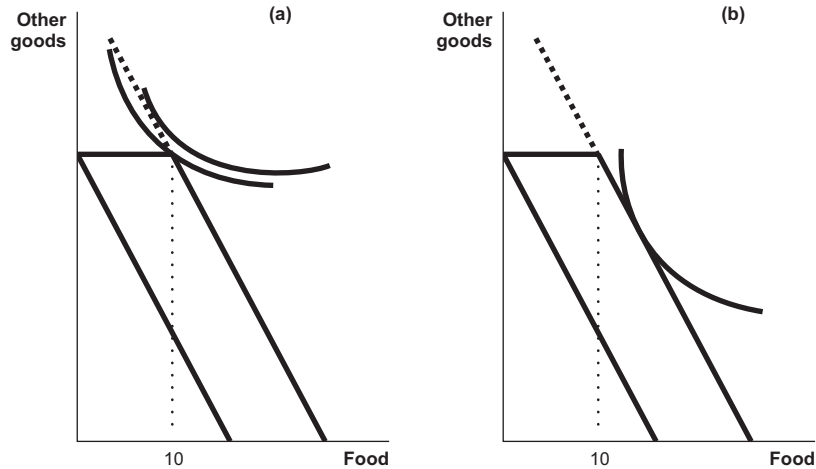
Total surplus = consumer surplus + producer surplus – cost of subsidy  $\approx 47,666.67$ , less than the original 48,000.

There is efficiency loss because trades are induced for which the actual resource cost (without the subsidy) is greater than consumer willingness to pay. The deadweight loss is the area of the triangle that encompasses these new trades (the shaded area in the graph, pointing to the original equilibrium):  $\frac{1}{2}(2,600/3 - 800)(10) \approx 333.33$ .

12. Governments offer both cash assistance and in-kind benefits, such as payments that must be spent on food or housing. Will recipients be indifferent between receiving cash versus in-kind benefits with the same monetary values? Use indifference curve analysis to show the circumstances in which individuals would be indifferent and situations in which the form of the benefits would make a difference to them.

Generally recipients can attain a higher level of utility (they can choose a consumption bundle on a higher indifference curve) when they are given cash rather than a specific good. People who would purchase the same amount of food or housing as the in-kind grant provides would be indifferent between in-kind and cash benefits because they would use the cash to purchase the same items. However, people whose preferences would lead them to purchase less food or housing than the in-kind grant provides would prefer to receive cash. That way they could spend some of the cash on food or housing and the rest on the other goods they prefer. Suppose the government provides the first ten units of food at no cost. The person represented in panel (a) of the following graph would prefer cash. The indifference curve tangent to the extension of the new budget constraint identifies a consumption bundle that includes less than ten units of food. The person represented in panel (b) would choose the same point given cash or food. The optimal consumption bundle includes more than ten units of food.





13. Consider Bill and Ted, the two citizens in the country of Adventureland described in Problem 9 from Chapter 1. Suppose that Bill and Ted have the same utility function  $U(Y) = Y^{1/2}$ , where  $Y$  is consumption (which is equal to net income).

a. Rank the three tax policies discussed in Problem 9 from Chapter 1 for a utilitarian social welfare function. Rank the three for a Rawlsian social welfare function.

The utility function is increasing in income. Rawlsian social welfare is therefore equal to the utility of the individual with lower income. For 0% and 25% tax rates, Ted has the lower incomes (\$120 and \$320, respectively). For a 40% tax rate, Bill has the lower income (\$240). Since  $\$320 > \$240 > \$120$ , Rawlsian social welfare is highest under the 25% tax rate and lowest under the 40% tax rate. To compute utilitarian social welfare, we compare:

$$\begin{aligned} \text{Utilitarian social welfare with a 0\% tax} &= 1,000^{1/2} + 120^{1/2} \approx 42.58 \\ \text{Utilitarian social welfare with a 25\% tax} &= 600^{1/2} + 320^{1/2} \approx 42.38 \\ \text{Utilitarian social welfare with a 40\% tax} &= 240^{1/2} + 280^{1/2} \approx 32.33 \end{aligned}$$

We see that the 0% tax rate is best.

b. How would your answer change if the utility function was instead  $U(Y) = Y^{1/5}$ ?

This change does not affect the order of tax rates according to the Rawlsian social welfare function. To compute social welfare for the utilitarian social welfare function we compare:

$$\begin{aligned} \text{utilitarian social welfare with 0\% tax} &= (1,000)^{1/5} + 120^{1/5} \approx 6.59. \\ \text{utilitarian social welfare with 25\% tax} &= 600^{1/5} + 320^{1/5} \approx 6.76. \\ \text{utilitarian social welfare with 40\% tax} &= 240^{1/5} + 280^{1/5} \approx 6.08. \end{aligned}$$

We see that the 25% tax rate is best and the 40% tax rate is the worst.

c. Suppose that Bill and Ted instead have different utility functions: Bill's utility is given by  $U^B(Y) = \frac{1}{4}Y^{1/2}$ , and Ted's is given by  $U^T(Y) = Y^{1/2}$ . (This might happen, for example, because Bill has significant disabilities and therefore needs more income to get the same level of utility.) How would a Rawlsian rank the three tax policies now?

Since the two have different utility functions, it is no longer easy to see who is better off under each situation. Under the 0% tax policy, we see that Ted has utility  $120^{1/2} \approx 10.95$  and Bill has utility  $\frac{1}{4} 1,000^{1/2} \approx 7.91$ . We see that Bill is worse off under this pol-

icy. Since the other two tax policies make Bill worse off and Ted better off than the 0% policy, Bill's utility will be used to compute Rawlsian social welfare. Rawlsian social welfare is highest with 0% taxes and lowest with 50% taxes, the policies that make Bill the best and worst off, respectively.

Effects of Redistributive Policies in Adventureland			
	0%	25%	40%
Bill's Pre-Tax Income	\$1,000	\$800	\$400
Bill's Taxes	0	\$200	\$160
Bill's Net Income	<b>\$1,000</b>	<b>\$600</b>	<b>\$240</b>
Ted's Pre-Tax Income	\$120	\$120	\$120
Ted's Transfer Payment	0	\$200	\$160
Ted's Net Income	\$120	<b>\$320</b>	<b>\$280</b>

14. You have \$3,000 to spend on entertainment this year (lucky you!). The price of a day trip ( $T$ ) is \$40 and the price of a pizza and a movie ( $M$ ) is \$20. Suppose that your utility function is  $U(T, M) = T^{1/3}M^{2/3}$ .

a. What combination of  $T$  and  $M$  will you choose?

This question can be solved by students who have taken calculus, following the approach described in the appendix to the chapter.

The constrained optimization problem can be written as

$$\text{Max } T^{1/3}(M)^{2/3} \text{ subject to } \$3,000 = 40T + 20M.$$

Rewriting the budget constraint as  $M = 150 - 2T$  and substituting into the utility function gives

$$\text{Max } T^{1/3}(150 - 2T)^{2/3}.$$

Taking the derivative with respect to  $T$  and setting equal to zero gives

$$1/3 T^{-2/3} (150 - 2T)^{2/3} - 4/3 T^{1/3}(150 - 2T)^{-1/3} = 0.$$

Rearranging gives

$$(150 - 2T) = 4T, \text{ or } T = 150/6 = 25.$$

Plugging back into the budget constraint gives

$$M = 150 - 2(25) = 100.$$

You take 25 trips and go on 100 movie-and-a-pizza outings.

b. Suppose that the price of day trips rises to \$50. How will this change your decision?

The new constrained optimization problem can be written

$$\text{Max } T^{1/3}(M)^{2/3} \text{ subject to } \$3,000 = 50T + 20M.$$

Rewriting the budget constraint as  $M = 150 - 2.5T$  and substituting into the utility function gives

$$\text{Max } T^{1/3}(150 - 2.5T)^{2/3}$$

Taking the derivative with respect to  $T$  and setting equal to zero gives

$$1/3 T^{-2/3} (150 - 2.5T)^{2/3} - 5/3 T^{1/3}(150 - 2.5T)^{-1/3} = 0.$$

Rearranging gives

$$(150 - 2.5T) = 5T, \text{ or } T = 150/7.5 = 20.$$

Plugging back into the budget constraint gives:

$$M = 150 - 2.5(20) = 100.$$

You now take 20 trips and go on 100 movie-and-a-pizza outings.